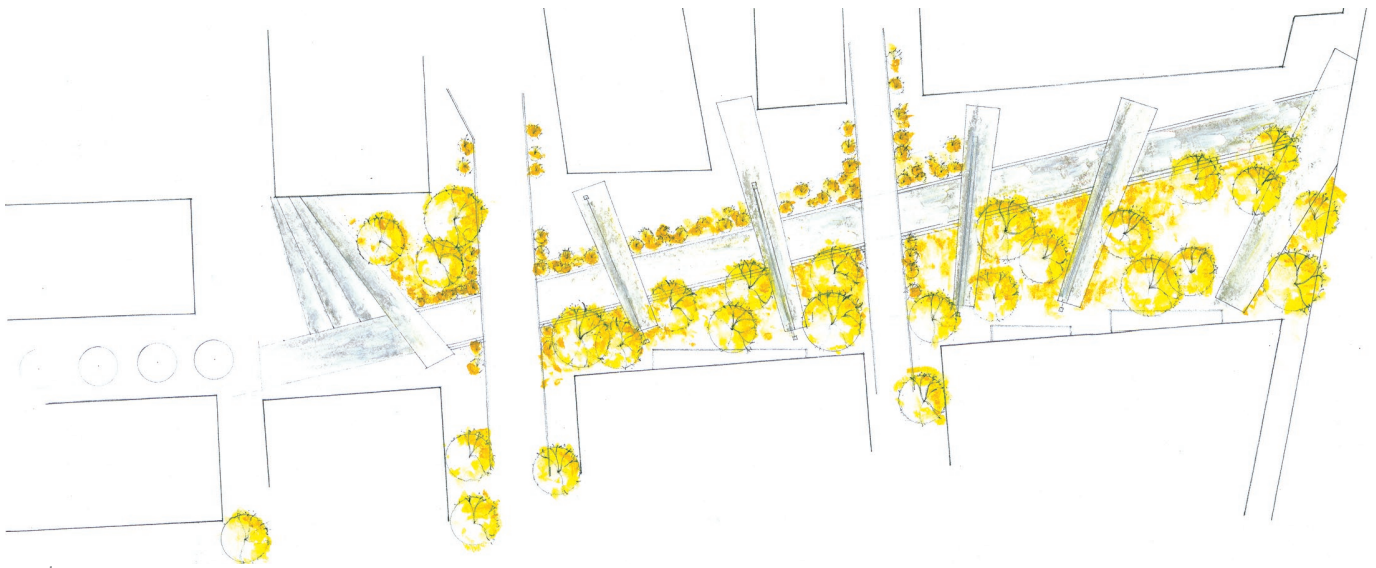


portfolio contents

lauren therese lynn

- 1* Courtyard - Salem, Massachusetts (fall 2003)
- 2* North Point Park - Cambridge, Massachusetts (summer 2004)
- 3* Immigration Center - Long Island, Boston, Massachusetts (fall 2004)
- 4* Scenari Futuri per il Parco Roncajette e la Zona Industriale - Padova, Italy (fall 2005)
- 5* Cincinnati Central Riverfront Park - Cincinnati, Ohio (summer 2006)
- 6* Royal Canal Linear Park - Dublin, Ireland (fall 2007)
- 7* Eco-Quartier Restanque Arène - Montpellier, France (winter 2007)
- 8* French Pavilion - World Exposition 2010 - Shanghai, China (under construction)
- 9* Daming Palace National Heritage Park - Xi'an, China (winter 2009)
- 10* Parc Mermoz - Orly, France (construction spring 2010)

1 - first semester core landscape studio project (harvard, gsd)
courtyard - salem, massachusetts



plan



model

This scheme emphasizes the experience of natural phenomena present on site and aims to bring awareness of such phenomena through individuals' interactions with the space.



mixed media montage

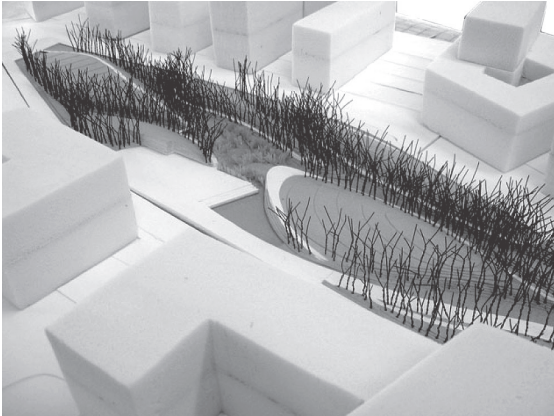


longitudinal section

2 - internship - mvva, cambridge, massachusetts

north point park - cambridge, massachusetts

Project Team - Chris Matthews (Project Manager), Inge Daniels, Matthew Gordy, Lauren Lynn, Erik Prince

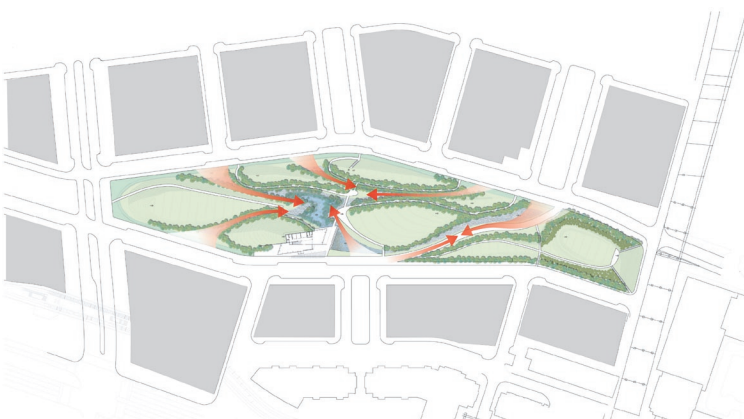


The park's design is based on creative environmental principles. It is organized by a series of planted swales that capture, cleanse, and transport storm water from the surrounding buildings and roads, allowing a reduction in underground site infrastructure and exposing park users to aspects of neighborhood ecology. The park is part of a larger green network intended to connect the park and the neighborhood with the broader city.

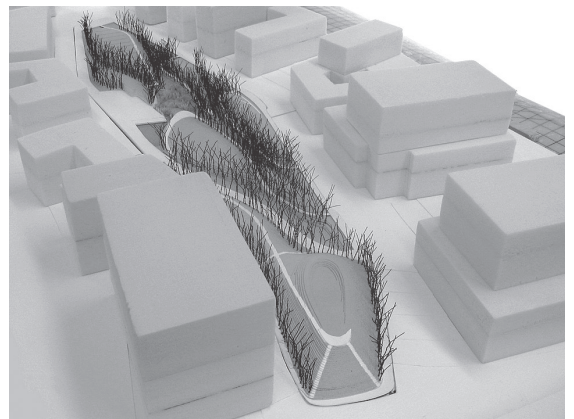
process model



plan



sight line diagram

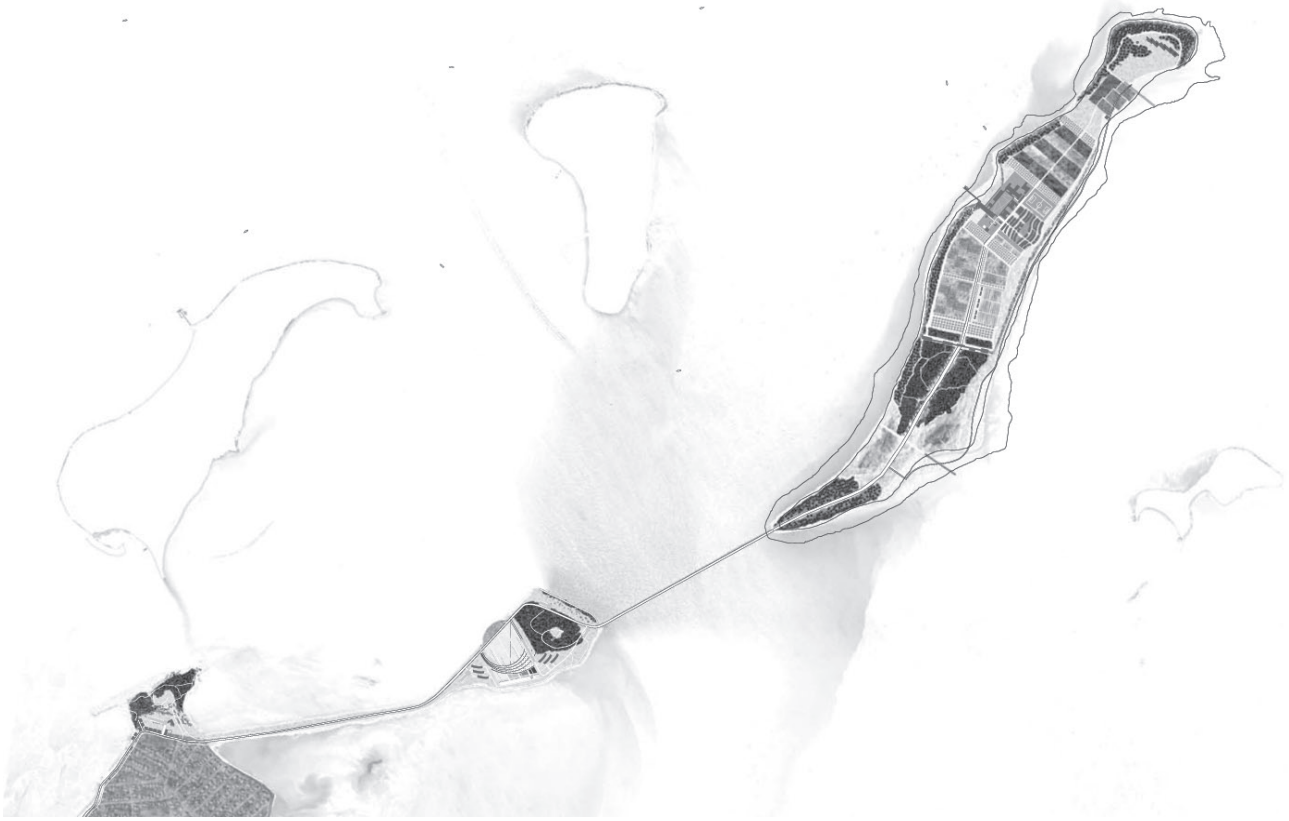


process model

3a - third semester core landscape studio project (harvard, gsd)

immigration center - long island, boston, massachusetts

Project Team - Charlotte Barrows, Lauren Lynn, Yoshiki Mishima, Jennifer Toy



site plan

The team's desire was to create a dense, mixed-use immigration center core while conserving the existing pine barren and salt marsh areas on site. The team took advantage of specific areas on site to locate new public and private parks. Additionally, they proposed to expand the existing organic garden into a full fledged working farm providing a further means through which new immigrants could passively and actively engage the land.



process montage - shoreline boardwalk



cross section through long island jetty park area

3b - third semester core landscape studio project (harvard, gsd)
immigration center - long island, boston, massachusetts



jetty park prior to sand accumulation



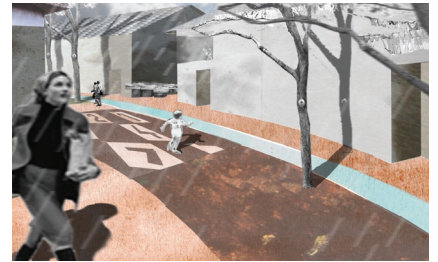
jetty park after sand accumulation



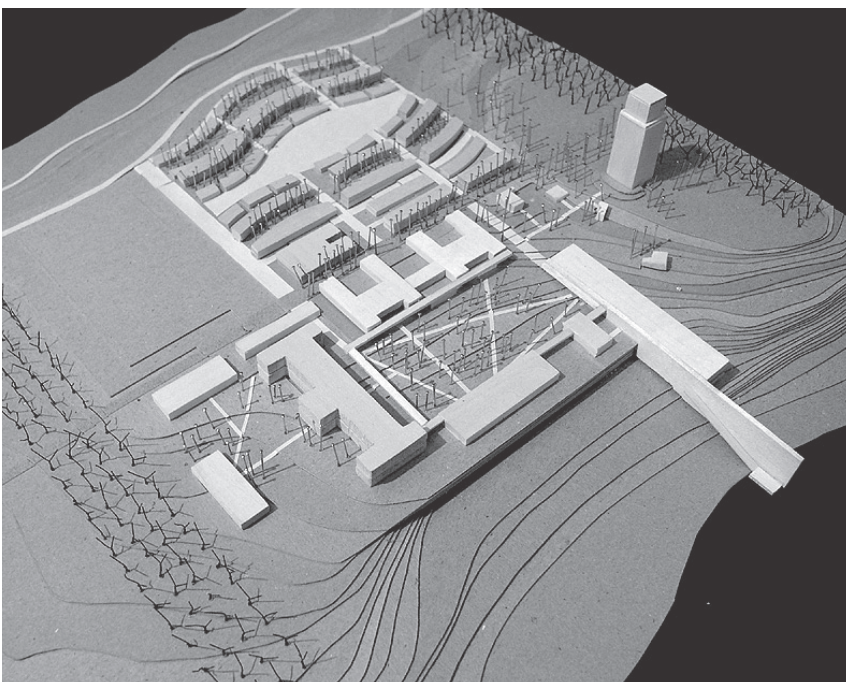
arrival ramp



view of boston after arrival



within core area



core area model

Throughout the project, the team explored a variety of representational techniques. Analogue mediums including paper collage, pastel, and watercolor were combined with digital technologies in order to produce final drawings.

4a - fifth semester option studio project (harvard, gsd)

scenari futuri per il parco roncajette e la zona industriale - padova, italy

Project Team - Ashley Bastow, Pippa Brashear, Lauren Lynn



site plan

This project is part of a larger study of the future of the Parco Roncajette, the industrial zone ZIP, and the landscape of the eastern part of the region of Padova. It is the product of a semester of collaborative work, and one of three alternative scenarios that was presented to the public and the municipal and business leaders of Padova in January, 2006.

This particular alternative develops the Roncajette area as an accessible, recreational, water-focused park, while revitalizing and reinventing ZIP's role as a leader in industrial research and environmentally sustainable development in Padova and the Veneto region.



cross section through proposed transit station



cross section through the roncajette canal and new residential development

4b - fifth semester option studio project (harvard, gsd)
scenari futuri per il parco roncajette e la zona industriale - padova, italy



before



redevelopment of old zip industrial zone



before



bike path to new mixed use development



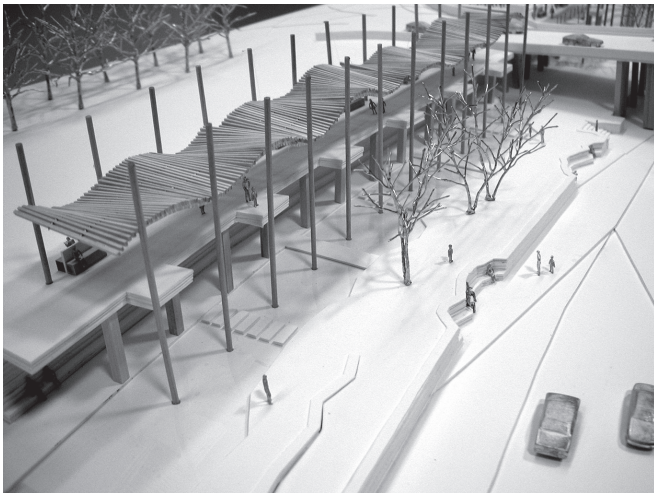
before



aerial view of zip and the roncajette park area

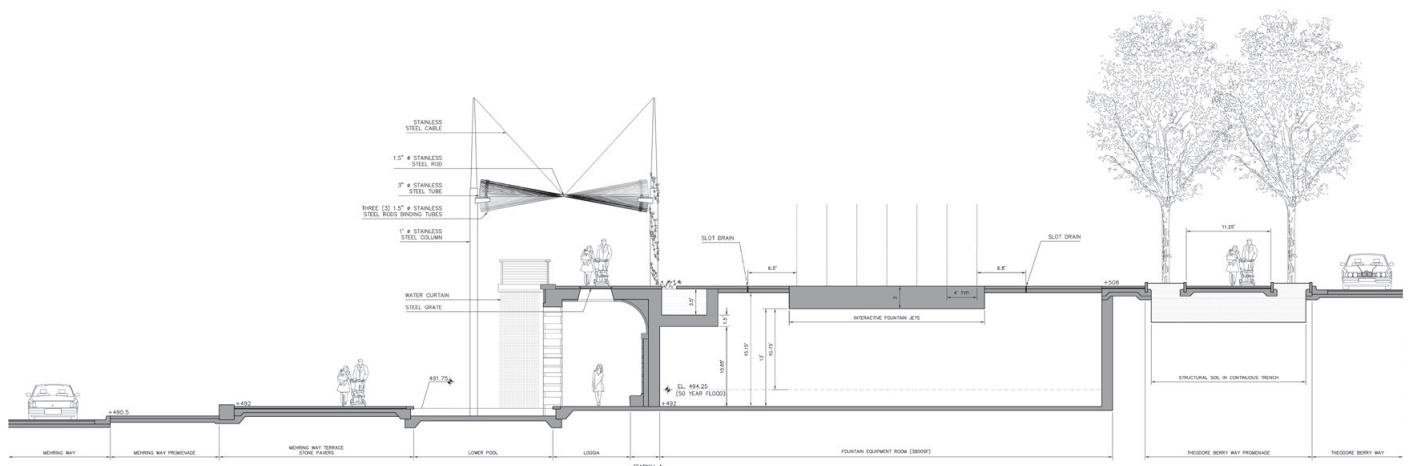
5 - internship - sasaki associates, watertown, massachusetts cincinnati central riverfront park

Project Team - Alistair McIntosh (Project Manager), Mark Dawson, Susannah Ross, Lauren Lynn, Lei Chang

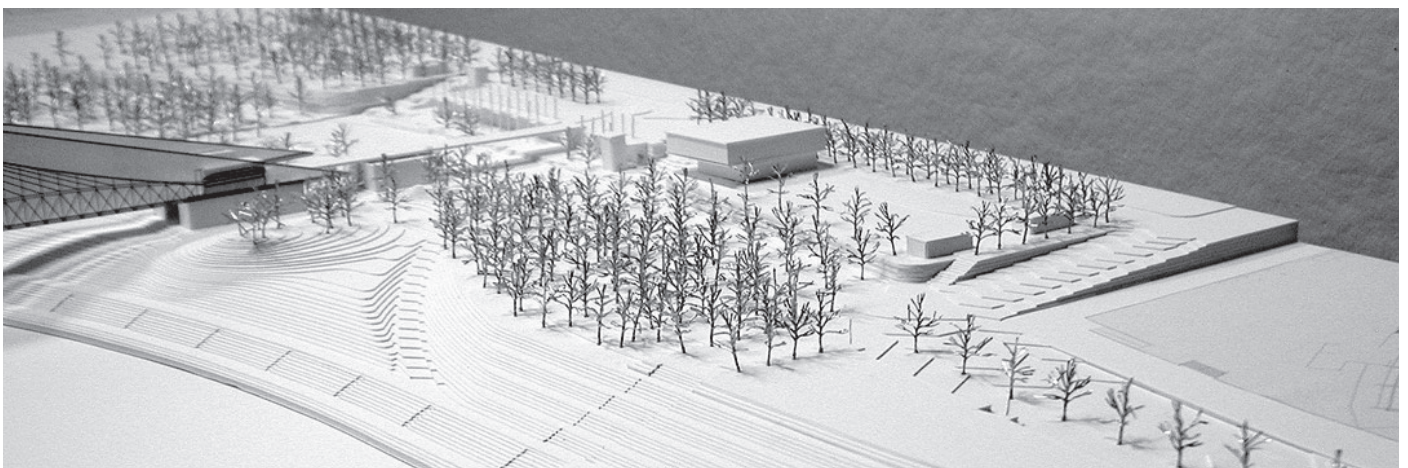


detail model

The 40-acre park aspires to reconnect the people of Cincinnati to the river's edge. In addition to incorporating the river into the park design, the theme of water is present throughout the park in a variety of forms including pools, cascades, and waterfalls. The park possesses many different personalities, with activity options as diverse as people's interests. My primary role in the project was the construction of physical models to be used in public meetings.



section through pergola and waterfall



site model

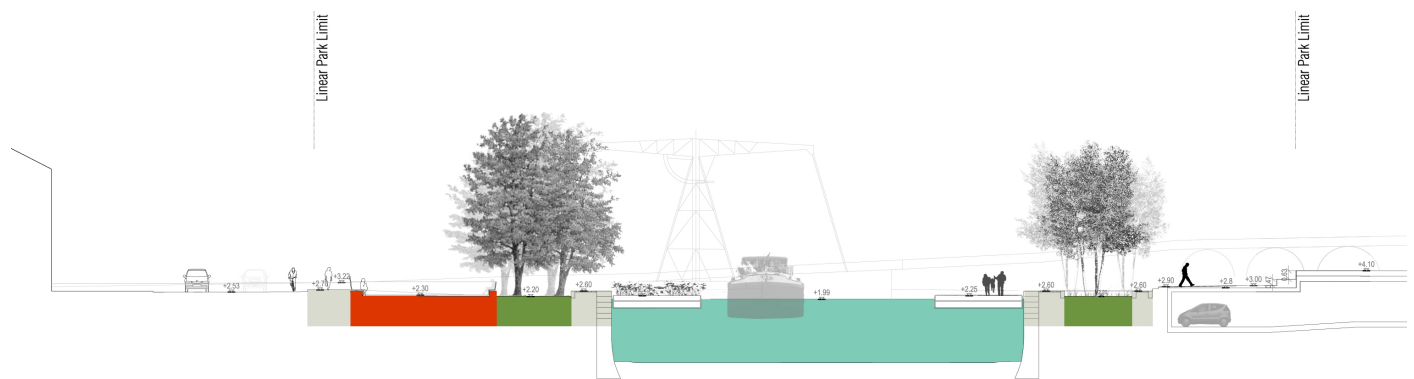
6 - project assistant - agence ter royal canal linear park - dublin, ireland

Project Team - Olivier Philippe, Anne Portnoi (Project Manager), Lauren Lynn, Celine Guyot



perspective

Sited in the heart of Dublin's new dockland business center, the park provides a natural breathing space where the idea of reversibility allows the project to adapt to a constantly evolving urban environment. Rectangular in form, gardens are placed in or out of the water; real or implied barges moored to structuring stone lines which are the main circulation corridors. An interplay between two levels, that of the water and that of the quays, is used throughout the site to create a new perception of the space, overcoming the existing linear division and extending park limits. The canal and its banks become one single vibrant expanse.



section



master plan

7a - project manager - agence ter éco-quartier restanque arène- montpellier, france

Project Team - Olivier Philippe, Lauren Lynn (Project Manager), Flore Baudelot in collaboration with Atelier Nebout Architects

Located on a 150-hectare post-industrial site, this competition-winning proposal envisions a new community organized around the sustainable principles of legibility, walkability, and the collection, retention, and reuse of rainwater on site. A new urban park forms the western spine of the development - the summit of which is created from the earth excavated on site. From this new perspective, views which link the community to the historic center of Montpellier are enabled.



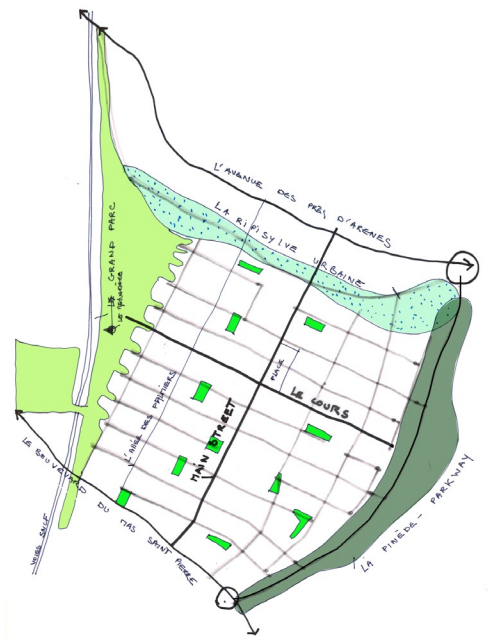
7b - project manager - agence ter
éco-quartier restanque arène- montpellier, france



perspective view of park



program diagram



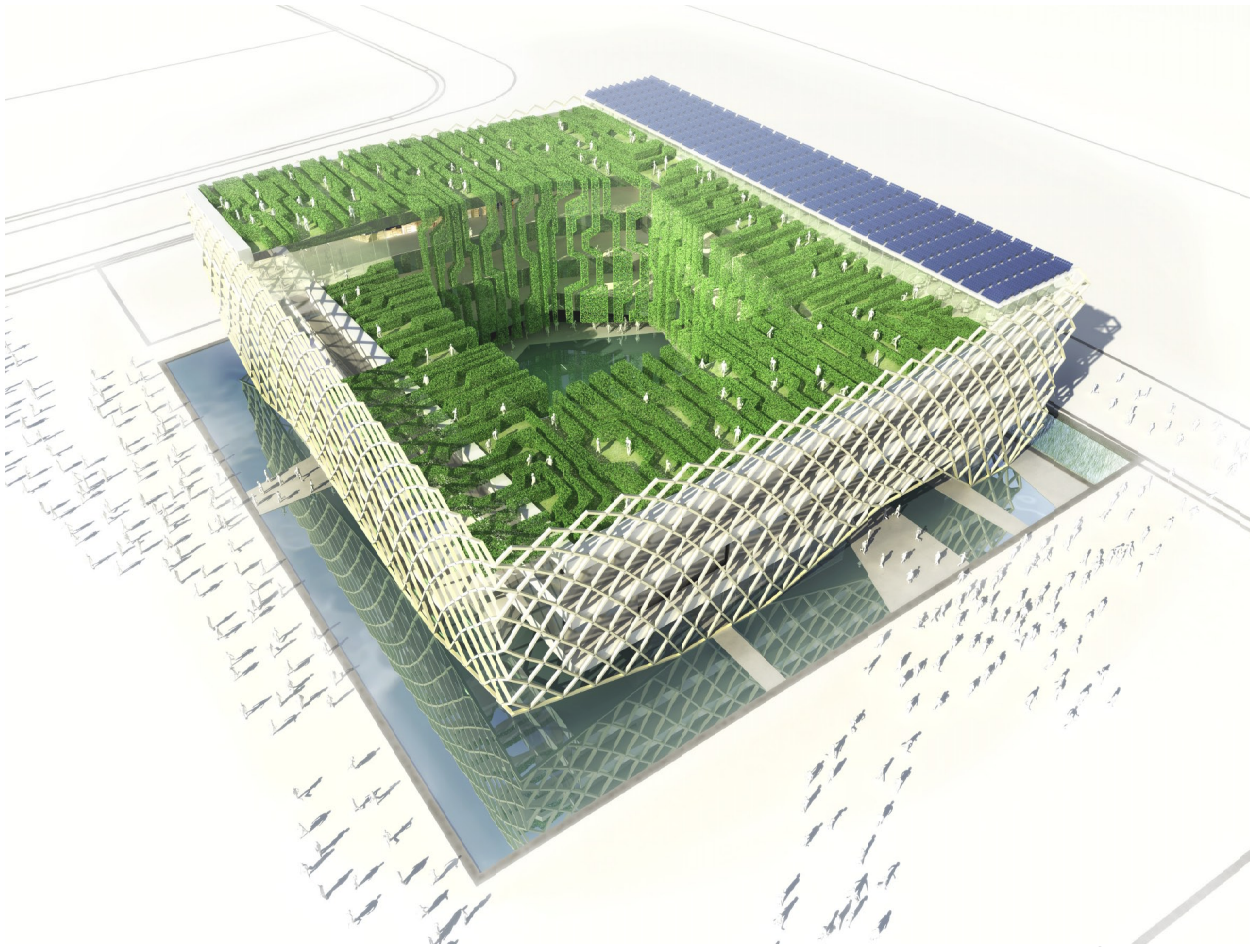
open space principles diagram



zoom of street layout and parc belvedere

8a - project manager - agence ter french pavilion - world exposition 2010 - shanghai, china

Project Team - Michel Hoessler, Lauren Lynn (Project Manager), Flore Baudelot, Isabelle Costy in collaboration with JFA Architectures



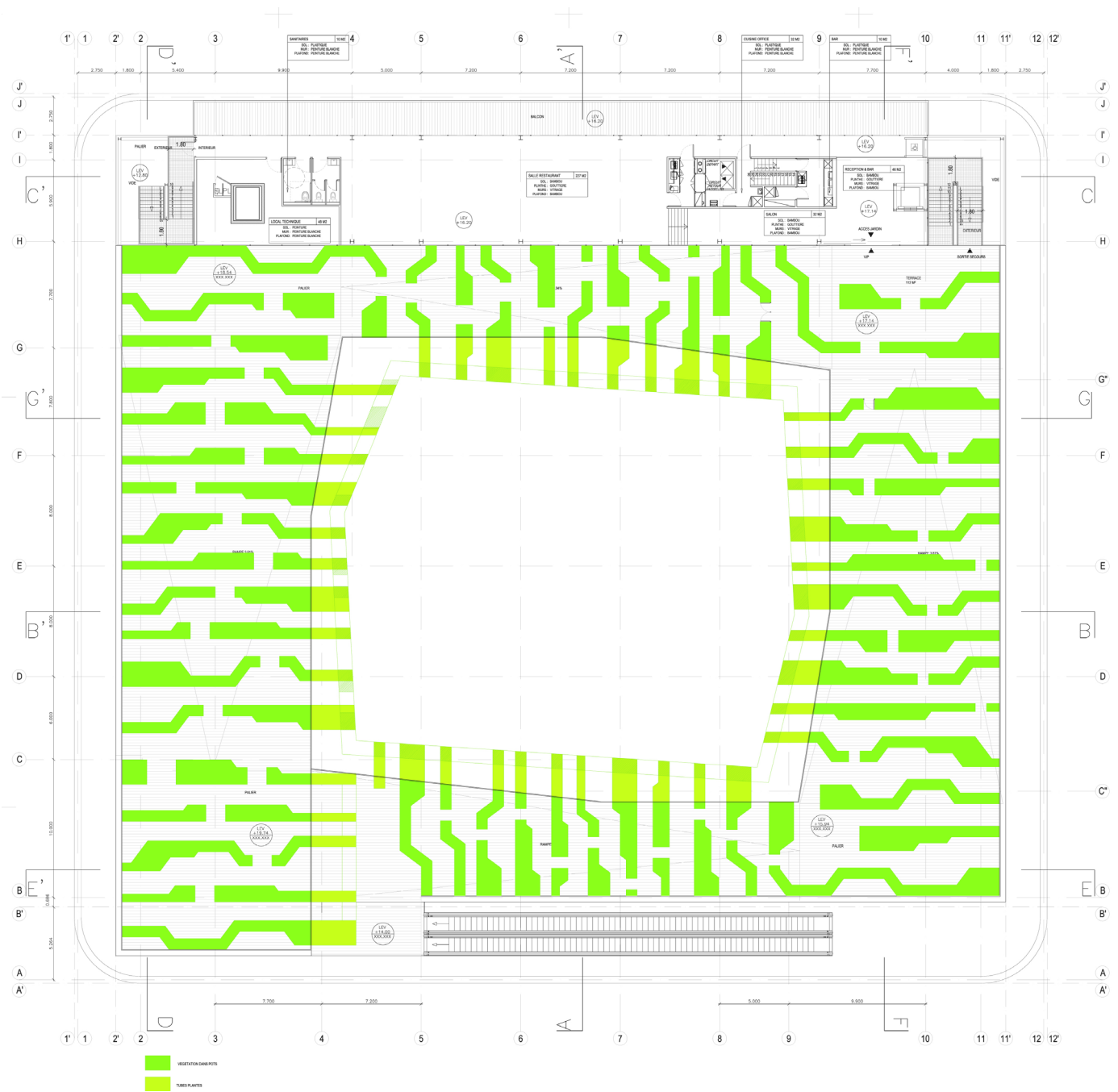
aerial perspective view

The French national pavilion will be a prominent, innovative structure reflecting, as much in its form and composition as its content, the country's dynamism and art de vivre. From this point of view – and in keeping with the theme of Expo 2010 – it will stand as living proof of France's capacity to break new ground in the fields of sustainable development and cultural outreach. The garden of the French Pavilion for the World Exposition in Shanghai is a contemporary redefinition of the principles of the traditional French garden typology. Within this project, the garden parterre reinterprets the form of an electronic circuit. The parterre transforms when suspended into a vertical garden with a double facade - the facade facing outward towards the courtyard, uniformity, and the facade facing inwards towards the exposition, diversity.

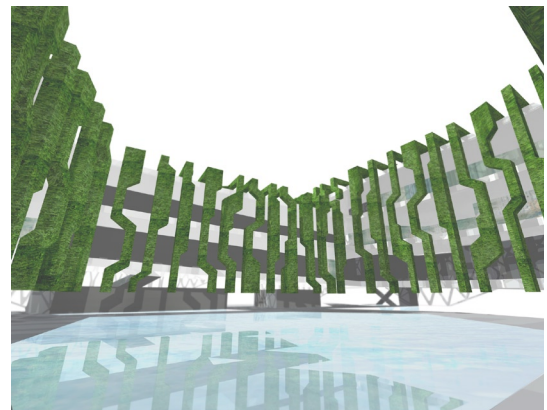


view of basin and garden at night within the courtyard

8b - project manager - agence ter
french pavilion - world exposition 2010 - shanghai, china



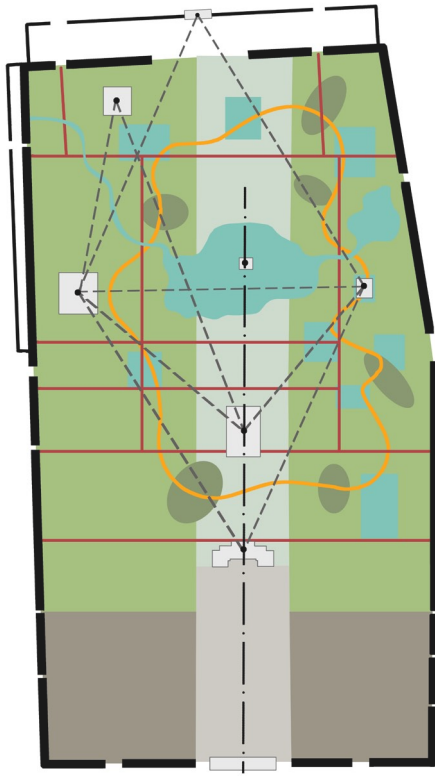
roof garden layout plan



3d studies of vertical garden

9a - project manager - agence ter daming palace national heritage park - xi'an, china

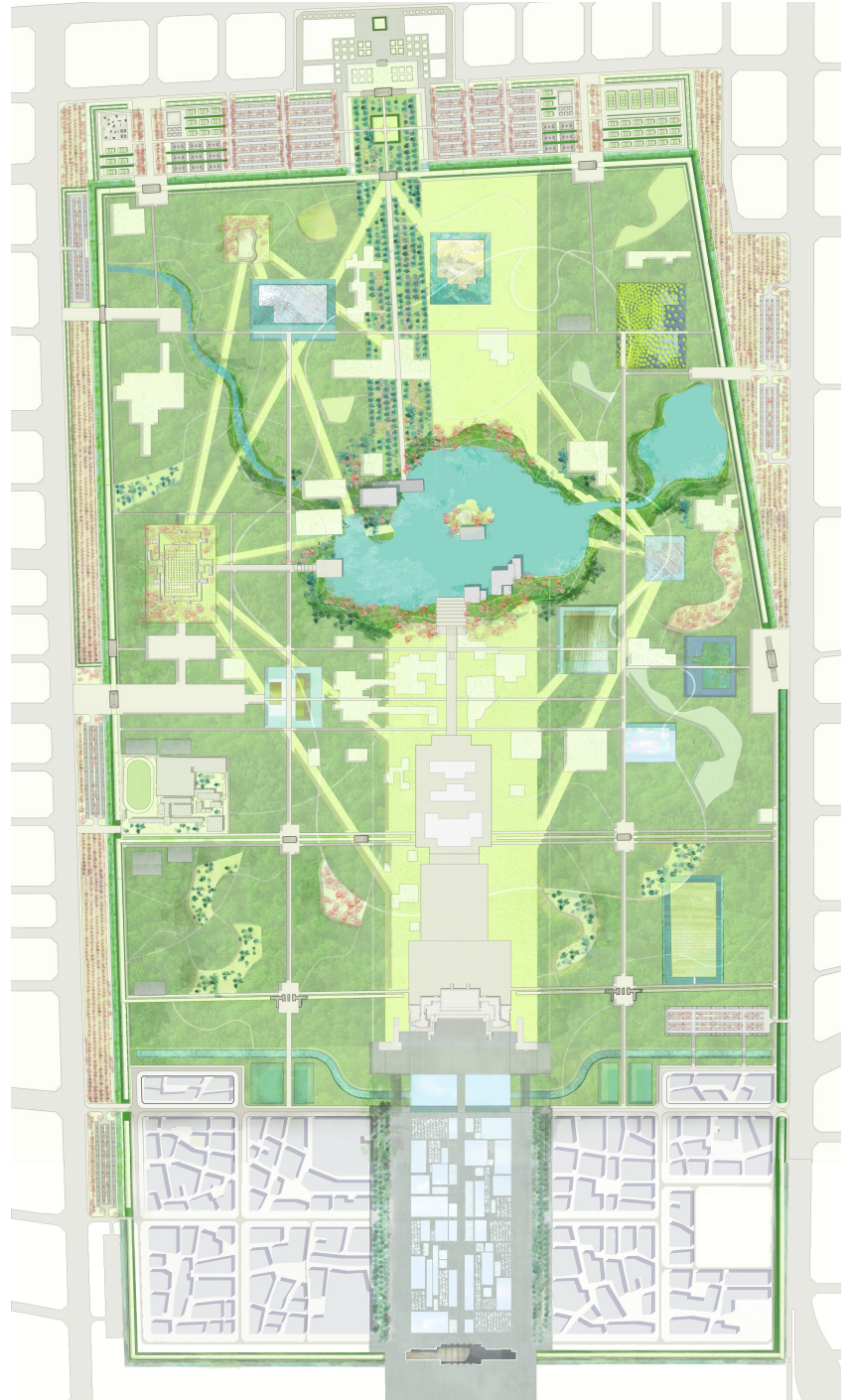
Project Team - Michel Hoessler, Lauren Lynn (Project Manager), Flore Baudelot, Junmin Chu



park organization

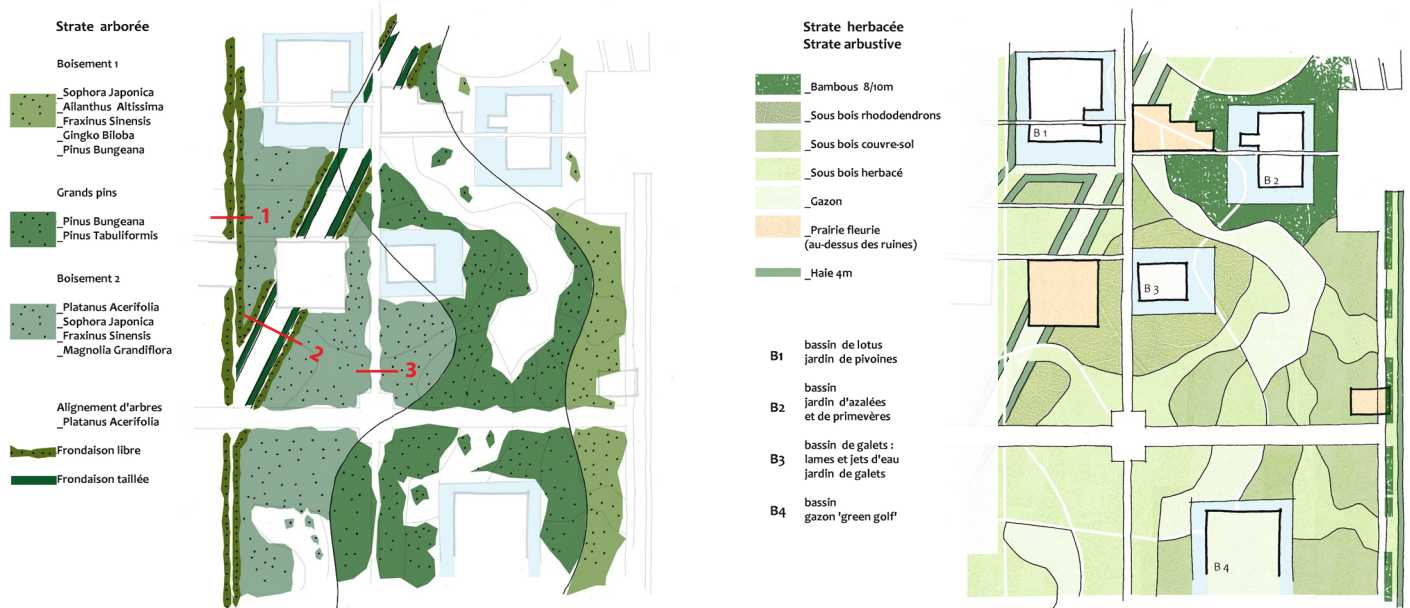
Situated in the northeast of Xi'an of the Tang Dynasty, Daming Palace was first built in the year of 634 A.D.. It was destroyed by wars towards the end of the Tang Dynasty. During its existence of about 200 years, Daming Palace was the decision-making centre of the Tang Dynasty. As an independent city, the palace occupied an area of 3.2 square kilometers. Today the site is in process of becoming a UNESCO World Heritage Site. Thus, an important part of the project deals with the preservation of existing ruins on site and the revelation of the ancient footprints of other ruins currently hidden below the soil.

The park's design is based on the revelation of the ruins via two overlaid systems. The first system, the "chemin céleste," takes the form of a meandering circuit which links 9 buried ruin sites. The form of these ruins is made manifest through the design of specifically themed basins above each ruin. The second system is that of the axes - taking its inspiration from traditional French park and garden design theory. These grand axes link both physically and visually the site's most significant ruins.

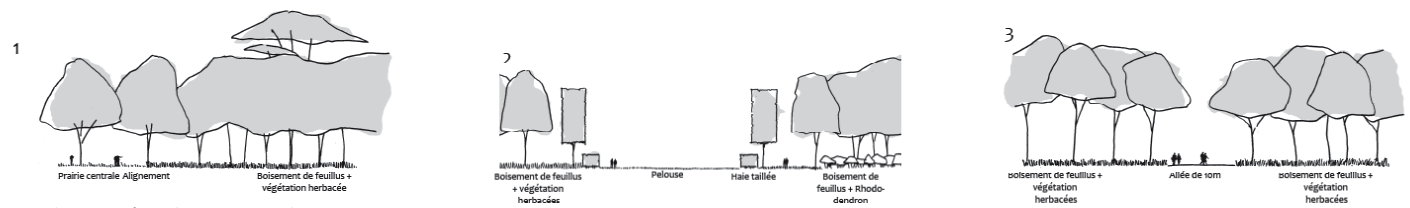


master plan

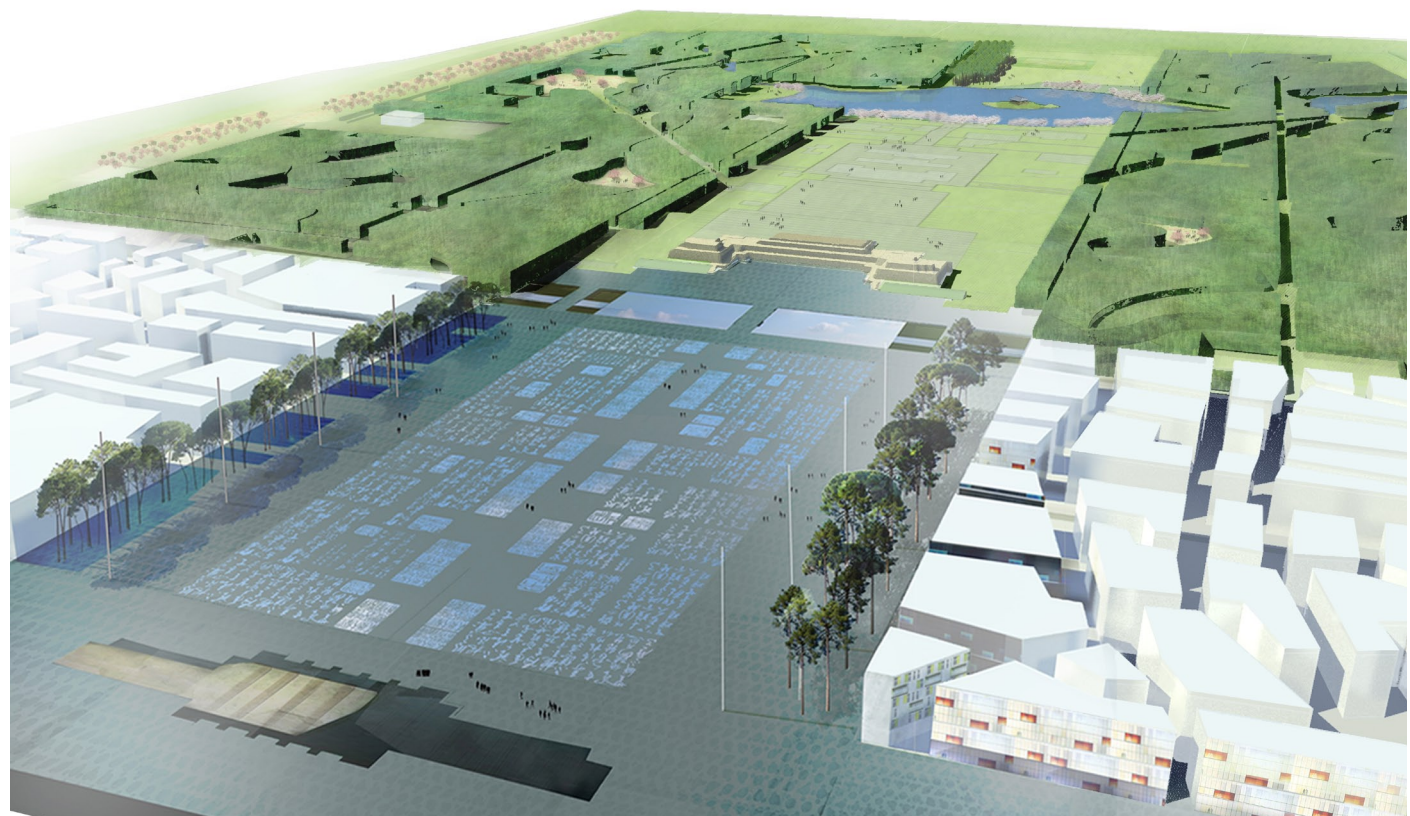
9b - project manager - agence ter daming palace national heritage park - xi'an, china



plan excerpts - planting strategies



sections - planting strategies

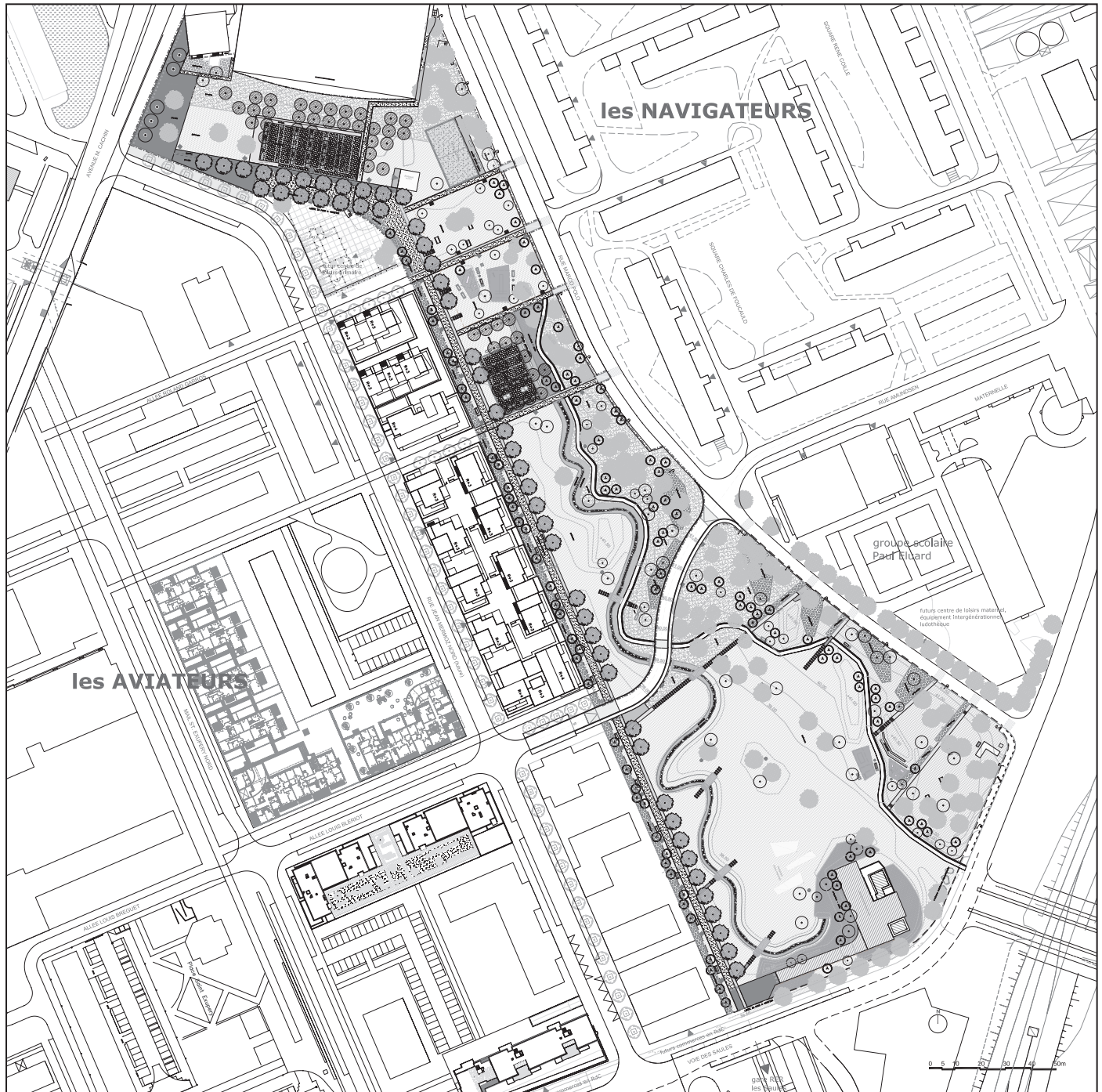


bird's eye view

10a - project assistant - agence florence mercier paysagiste

parc mermoz - orly, france

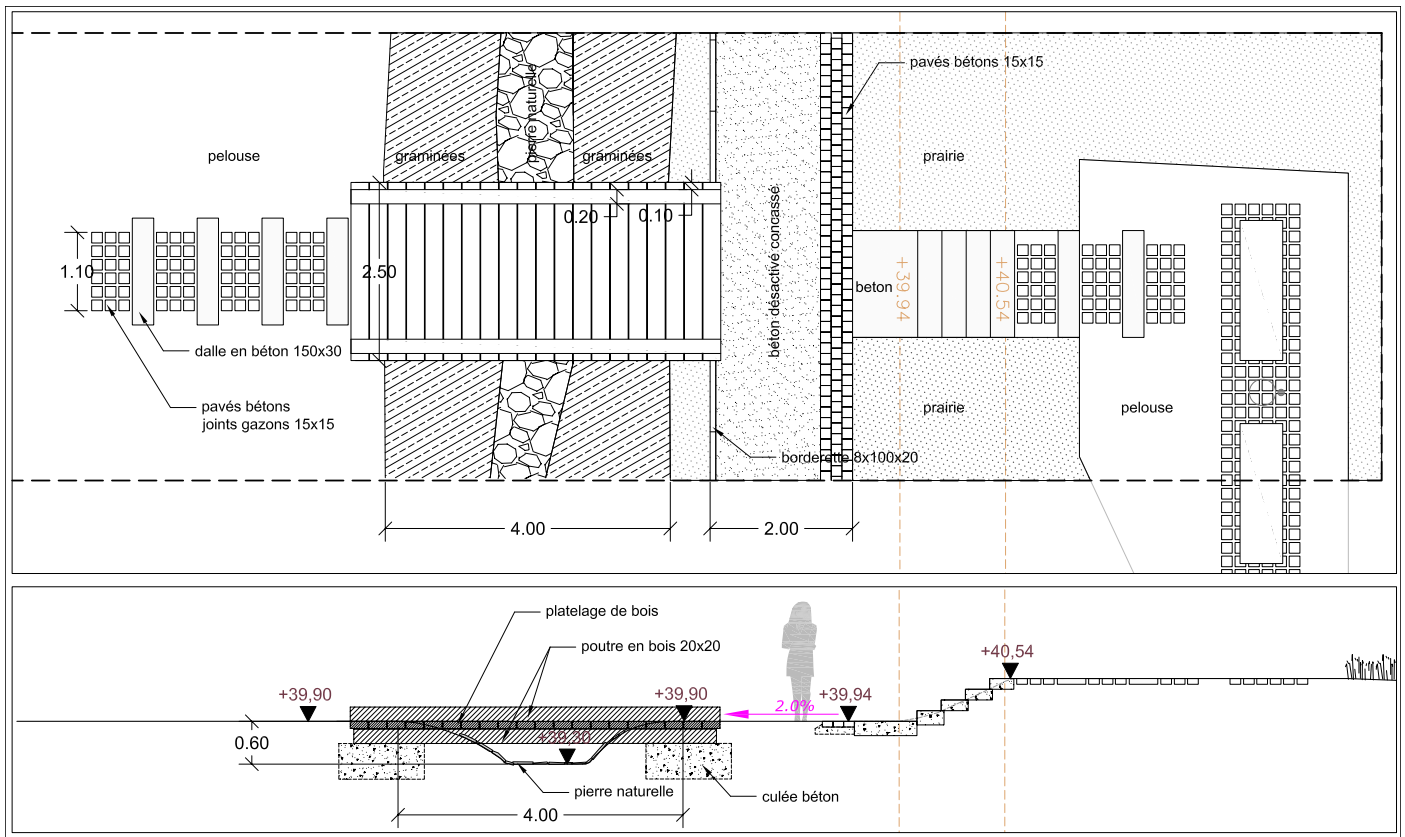
Project Team - Florence Mercier, Sophie Gerin (Project Manager), Lauren Lynn



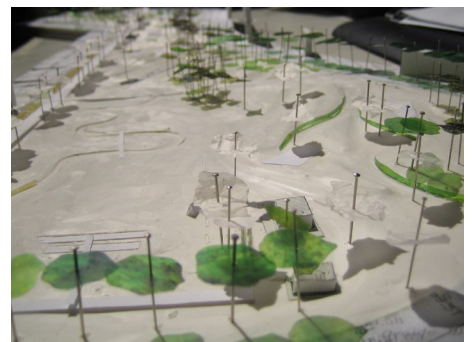
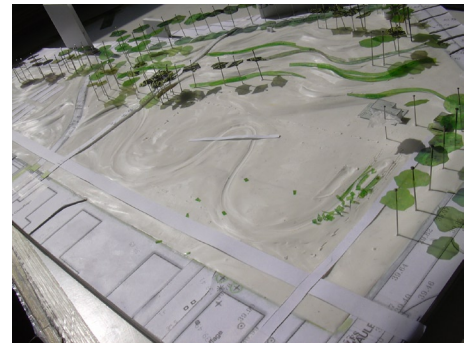
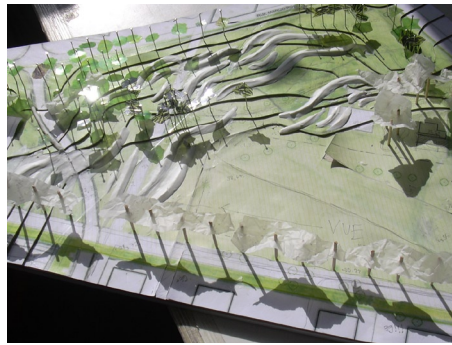
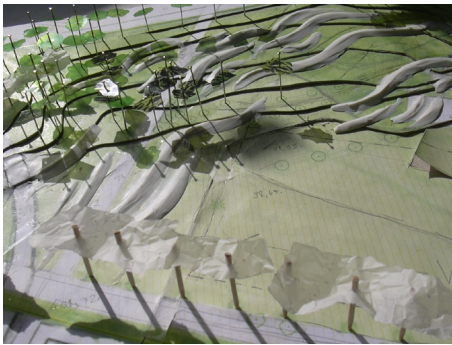
plan mass - phase PRO

The Parc Mermoz (Mermoz Park), a 4.7 hectare park, in Orly, France is situated in between two neighborhoods, the Aviateurs and the Navigateurs, upon a site once slated for the passage of a highway. The park is part of a greater urban renewal strategy in Orly, and it is intended to serve as an iconic link between the surrounding neighborhoods. The park is composed of a series of multi-use spaces beginning with a more formally structured entry at the north to a more bucolic setting in the south of the park where subtle manipulations of the topography make reference to the countryside. The spaces are connected by the prominent 'canal fleurie' - a canal of native flowers and grasses. Construction will begin in the spring of 2010.

10b - project assistant - agence florence mercier paysagiste
 parc mermoz - orly, france



footbridge detail over the 'canal fleurie'



process models